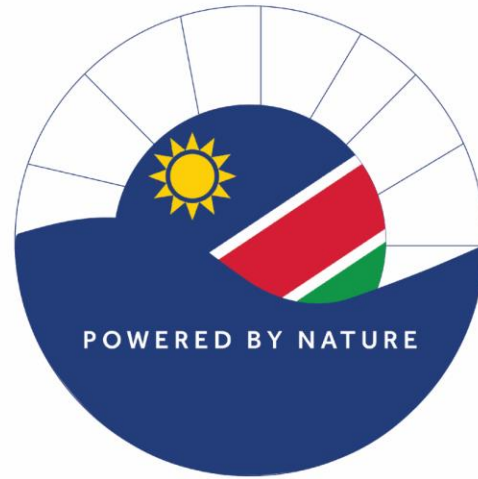




**Ministry of Mines & Energy**

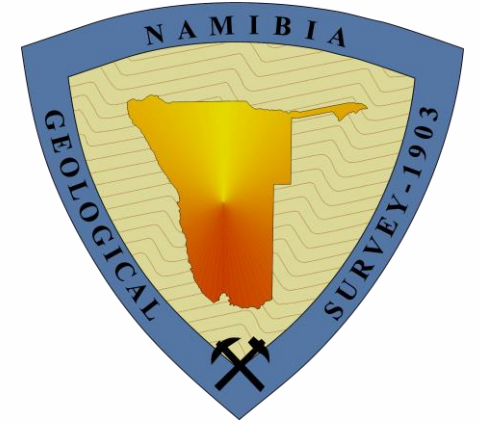
"promoting Namibia's mineral, geological and energy resources"



**NAMIBIA**

**AFRICA MINING INDABA**

**2023**



# Enabling Investment in Mineral Exploration and Mining in Namibia through competitive Data Infrastructure



**Gloria N. Simubali**  
**DED: Geological Survey of Namibia**

**06 February 2023**





NAMIBIA  
AFRICA MINING INDABA  
2023

# INTRODUCTION

- The MME is the State's lead agency in attracting private investment in resources exploration and development through:
  - the provision of geoscientific information on minerals and energy resources, and
  - management of an equitable and secure rights licensing systems for the mining, petroleum and energy industries
- MME also carries prime responsibility for regulating these extractive industries and dangerous goods in the country under current legislation, regulations and policies
- ***The first step of mineral exploration is the acquisition of baseline geoscientific data by Geological Survey of Countries.***





NAMIBIA  
AFRICA MINING INDABA  
2023

- Key Factors for attracting investor's in the mining sector include:
  - Political Stability
  - Good Governance
  - Conducive Legal and Regulatory framework
  - Sound infrastructure
  - Favourable geology
  - **Availability and accessibility of baseline data**



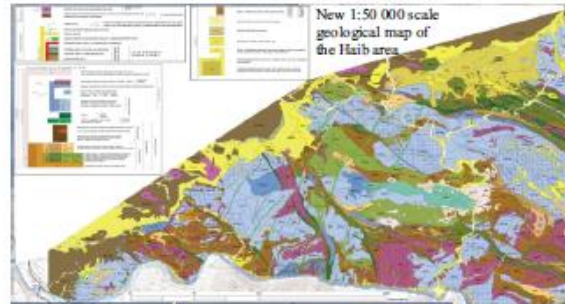
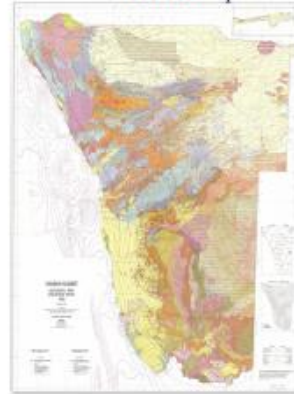


# STATUS OF GEOLOGICAL MAPPING IN NAMIBIA

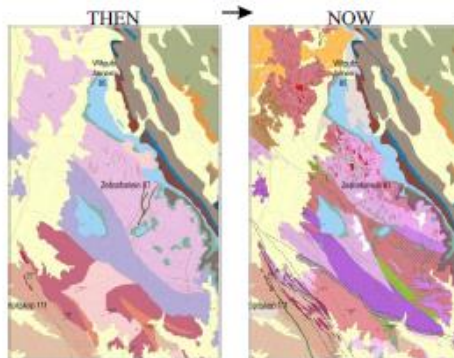
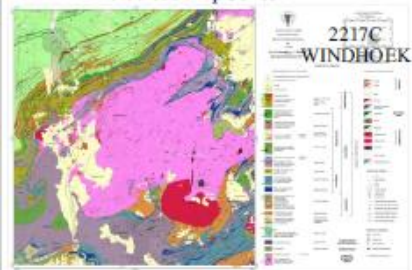
1:250 000 Map Series



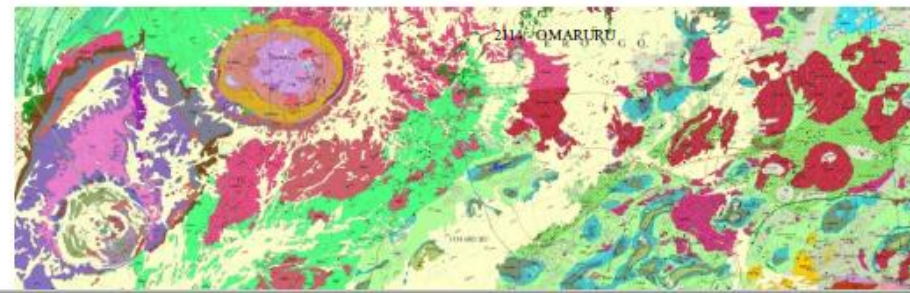
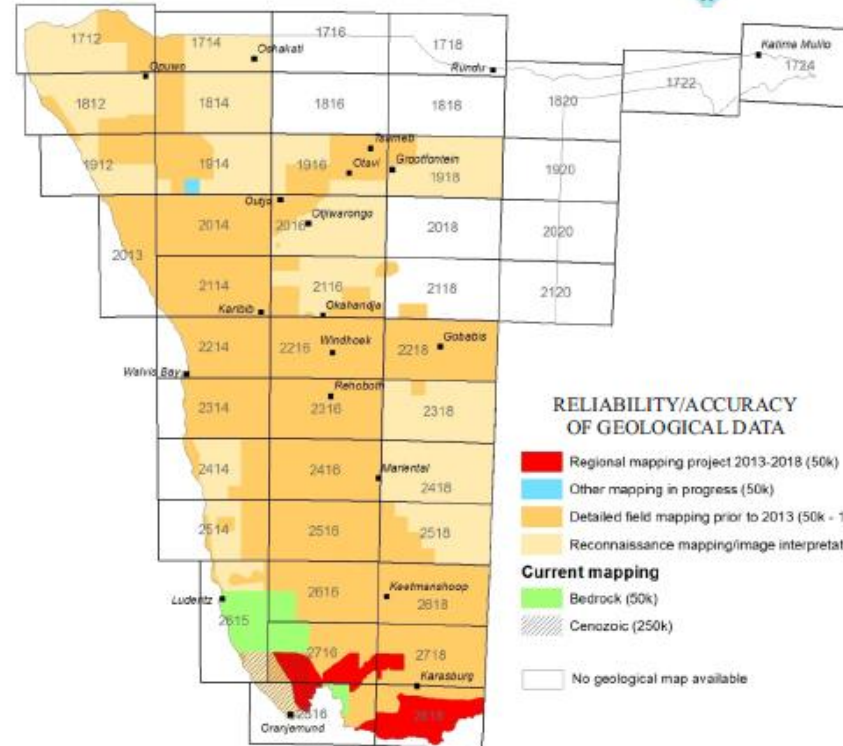
1:1 000 000 Map



1:100 000 Map Series



## REGIONAL GEOSCIENCE STATUS OF GEOLOGICAL MAPPING IN NAMIBIA



The full prices list can be found at this link:

[http://www.mme.gov.na/files/publications/ee8\\_Publication%20list%202019\\_KM.pdf](http://www.mme.gov.na/files/publications/ee8_Publication%20list%202019_KM.pdf)

Tel: 061 - 284 8111, email: regionalgeo@mme.gov.na / Geodata@mme.gov.na

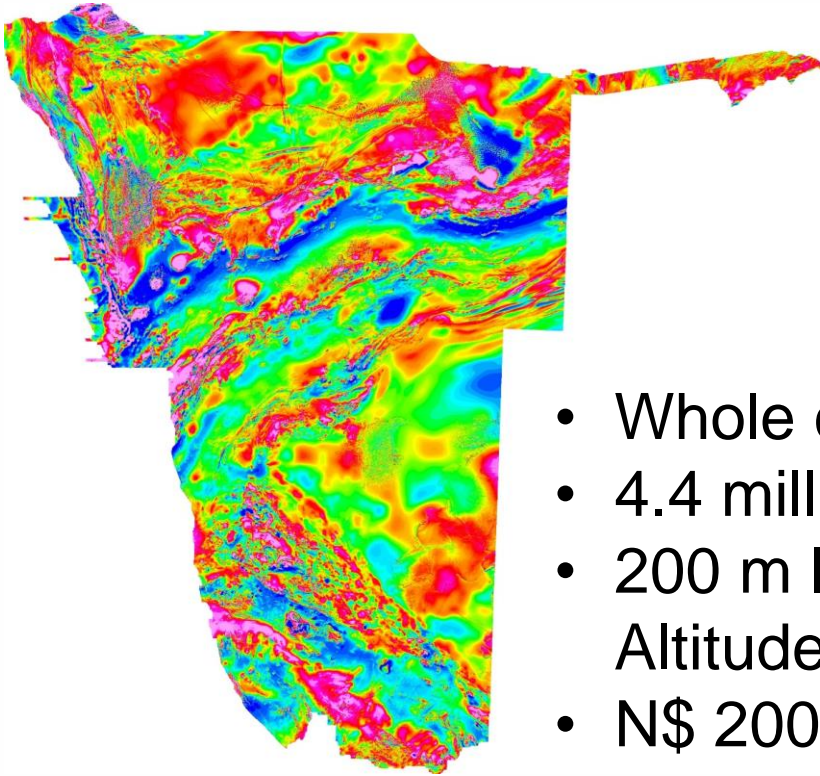




NAMIBIA  
AFRICA MINING INDABA  
2023

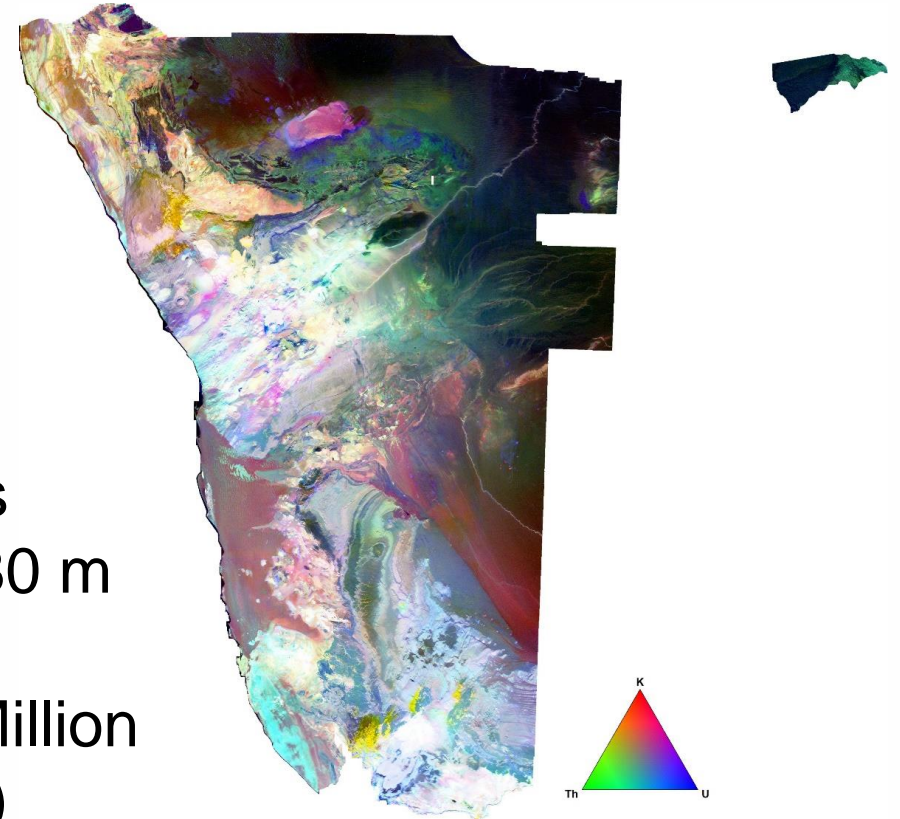
# Geophysical datasets

## Airborne Magnetic data



- Whole country coverage
- 4.4 million line kilometers
- 200 m line spacing and 80 m Altitude
- N\$ 200 million (U\$11.5 Million at current exchange rate)

## Radiometric data

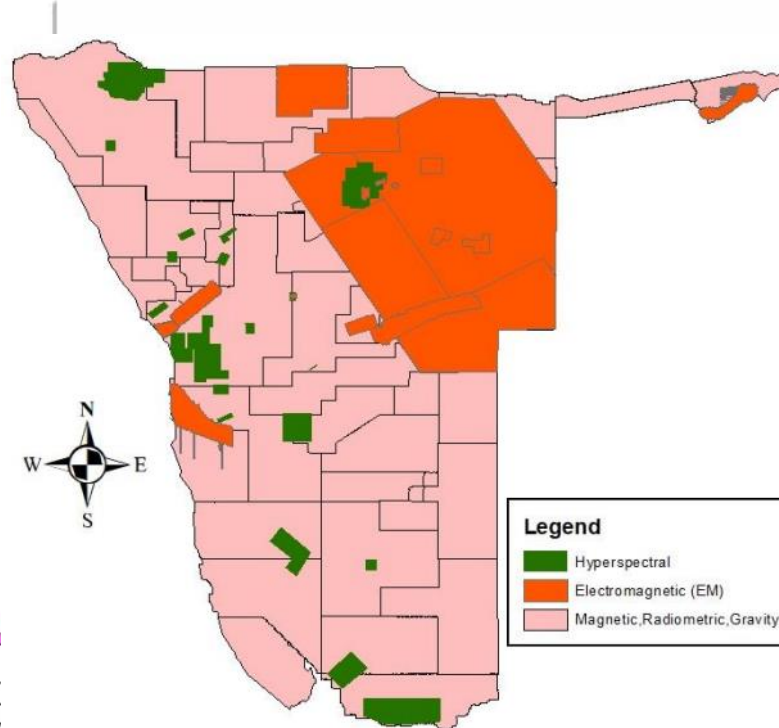
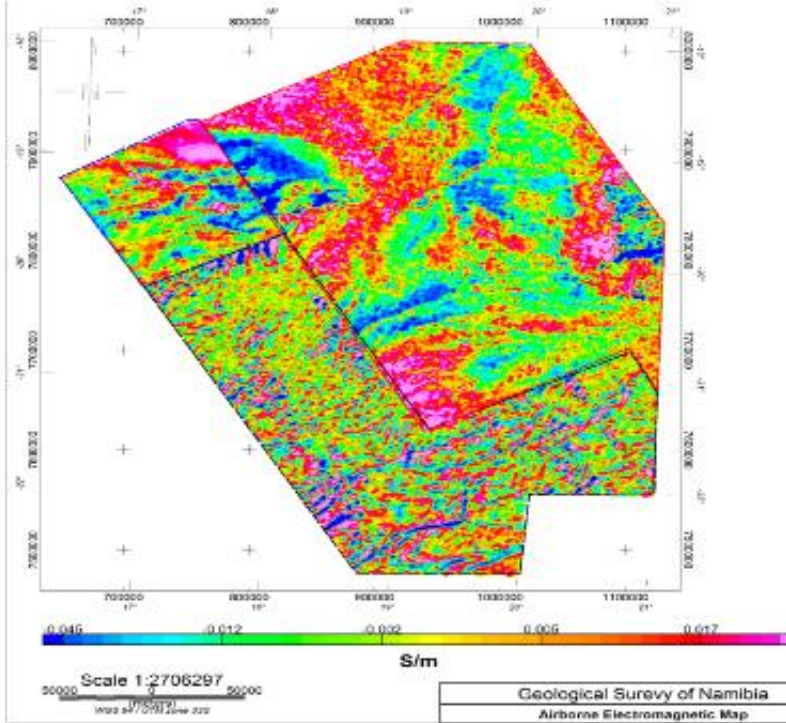




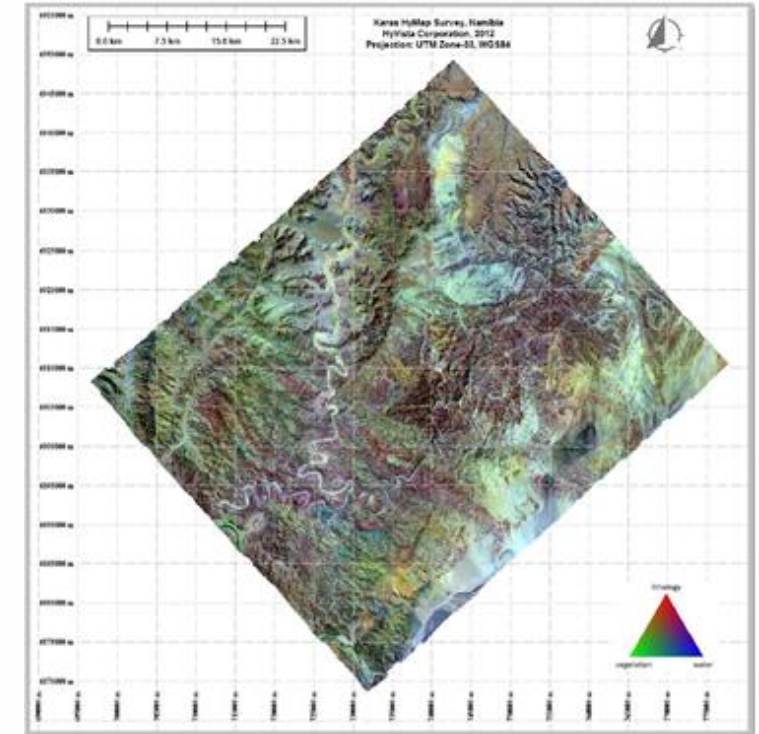
NAMIBIA  
AFRICA MINING INDABA  
2023

# Geophysical datasets

## Airborne EM data



## Hyperspectral data



- 14,459 line kilometres
- 10% of country coverage
- Plan is to acquire more EM in NW of Namibia to support increased mineral exploration

- Data covers an area of over 7500 km<sup>2</sup>
- Patchy country coverage
- Targeted area is NW of Namibia to fast track geological mapping and mineral exploration



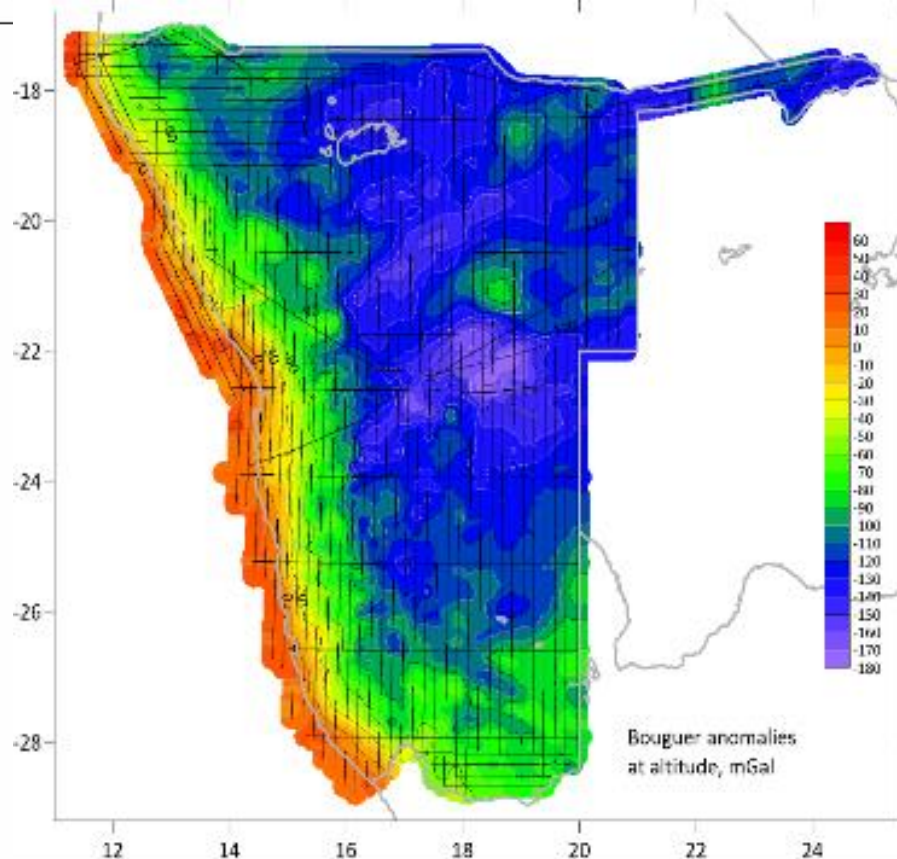




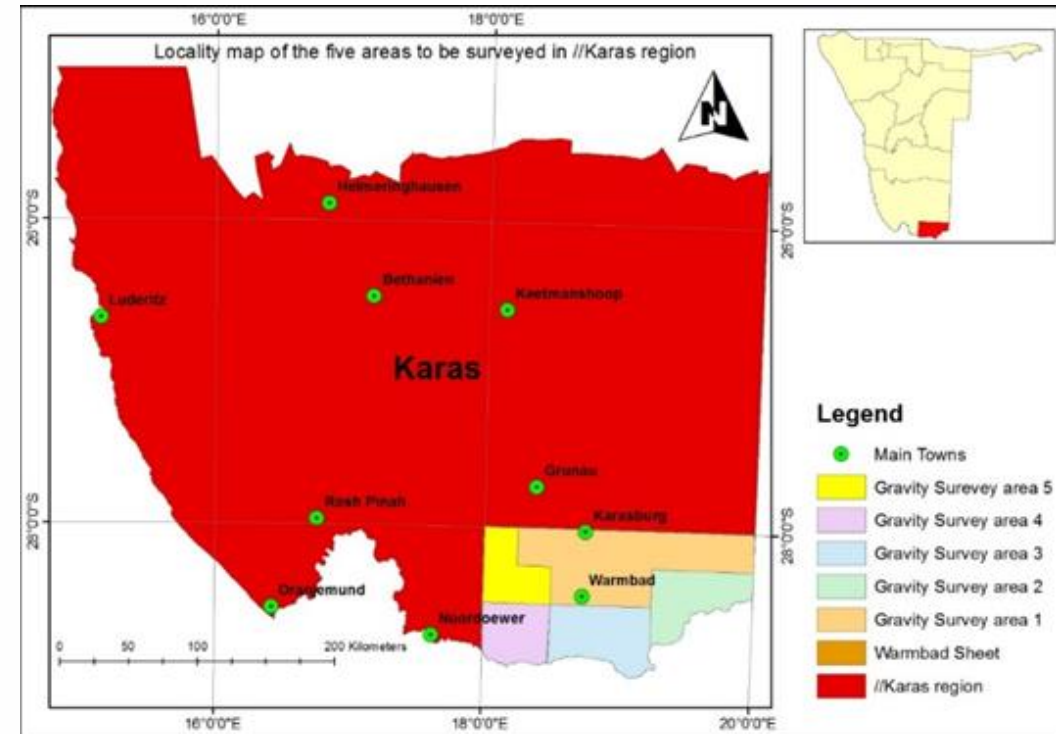
NAMIBIA  
AFRICA MINING INDABA  
2023

# Geophysical datasets

## Regional Gravity Data



## Planned Ground Gravity Survey



- Regional gravity – 18 km line spacing
- Resume ground gravity surveys in selected areas
- Plan is to undertake gravity surveys to compliment detailed geological mapping





NAMIBIA  
AFRICA MINING INDABA  
2023

To support potential mineral investors in accessing the wealth of information accumulated over more than 120 years of mineral exploration

# DATA ACCESSIBILITY



## Earth Data Namibia



### Mining

- Mineral Licenses
- Mineral Provinces
- Mines, Plants, Dumps

### Environment

- Sites of environm. Concern
- Groundwater Monitoring
- Soil, Sediment Sampling
- Surface Water Sampling
- Radon Monitoring
- Air Monitoring

### Resources and Exploration

- Mineral Deposits
- Geochemistry
- Drill Holes

### Geology

- Geological Map 1:1.000.000
- Geological Map 1:250.000

### Property

- Farms
- Addresses

### Documents

- Reports
- Documents
- Spatial Data incl. Metadata
- Literature
- Documents of Literature

- GIS



a customized **advangeo**® product, designed and developed by **beak**  
Prediction Software CONSULTANTS





# Drill core archive



National drill core and chip samples archive: more than 1000 diamond drill holes & percussion-chip drill holes. New drilling being added to the archive whenever possible.

INDABA



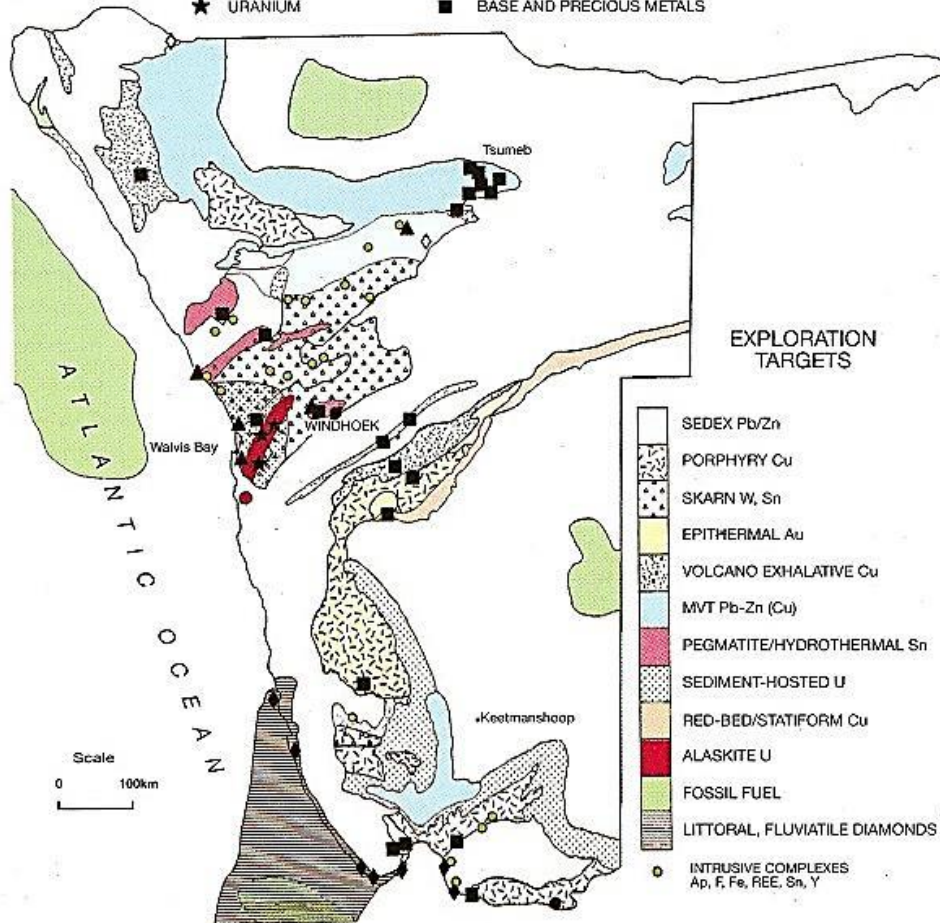


NAMIBIA  
AFRICA MINING INDABA  
2023

# EXPLORATION POTENTIAL MAP

## SELECTED DEPOSITS:

- RARE METALS
- ◆ DIAMONDS
- ★ URANIUM
- ▲ INDUSTRIAL MINERALS
- ◇ SEMI-PRECIOUS STONES
- BASE AND PRECIOUS METALS



- Good prospective geology, compilation of mineral exploration data in summarised reports on the basis of 1:250k topo maps.
- North western part of the country done (7) - requires update.



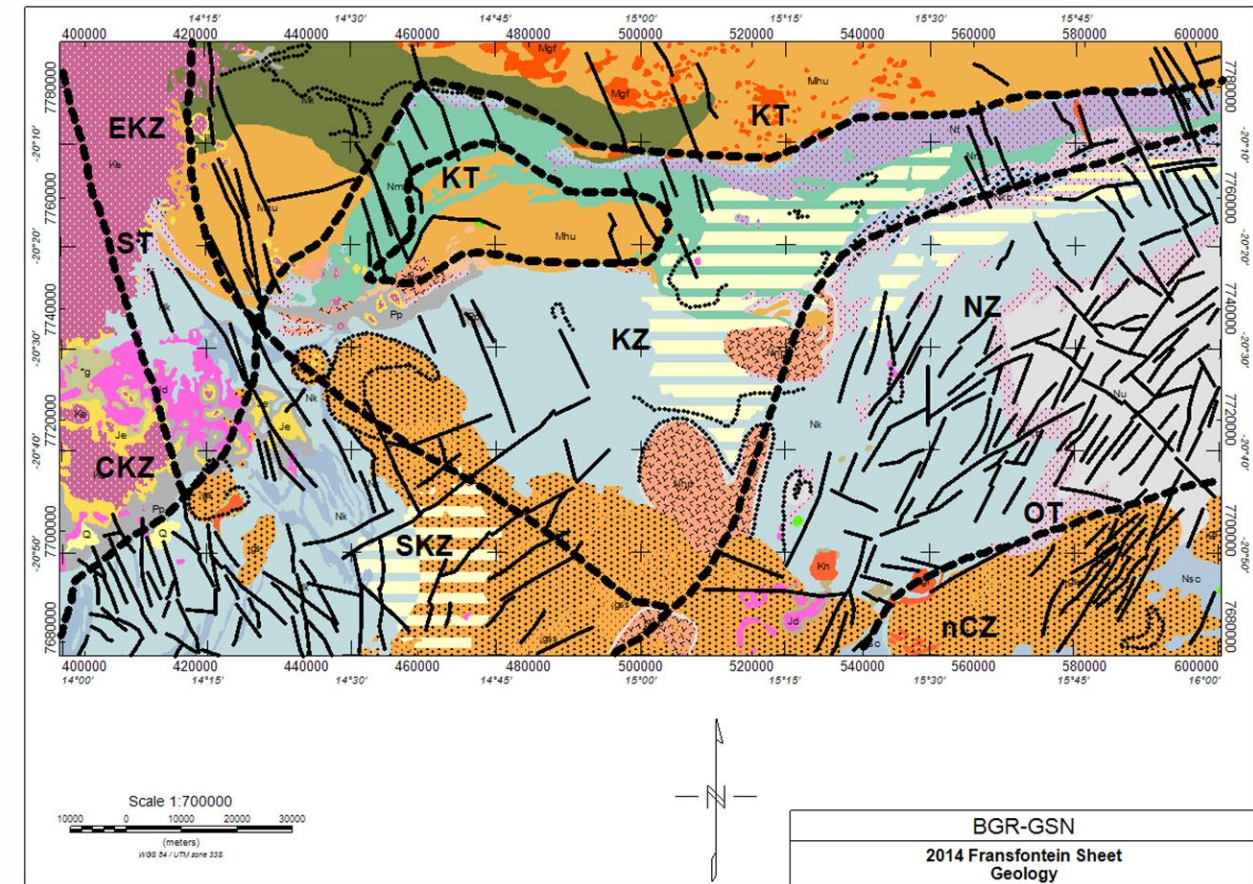


NAMIBIA  
AFRICA MINING INDABA  
2023

# RESEARCH AND INNOVATION

## Data mining:

- Integrated interpretation of data to highlight mineral prospectivity.

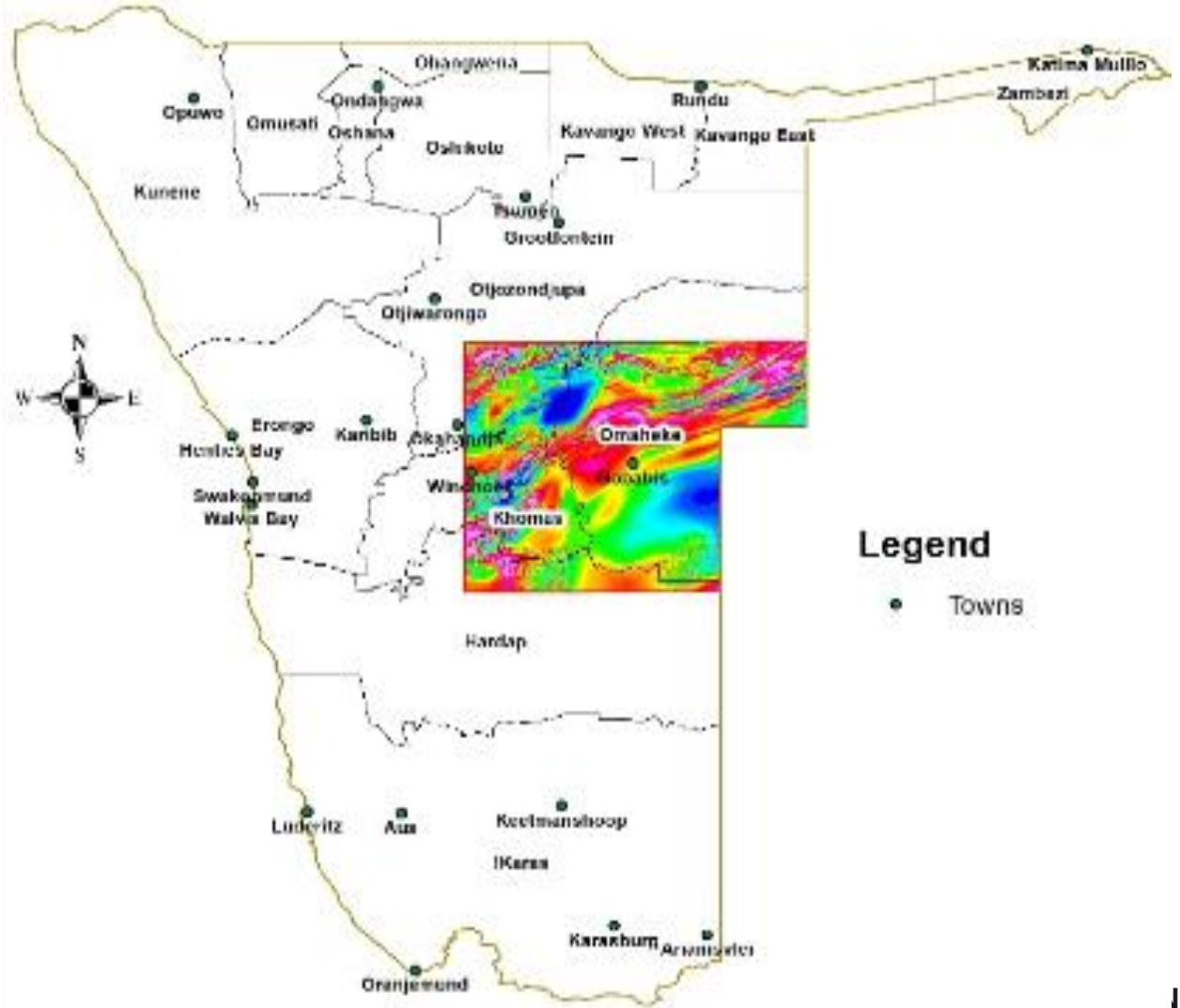






# RESEARCH AND INNOVATION

- Free access to geophysical dataset in underexplored areas to attract investment - on pilot basis to test feasibility of countrywide data free access.





NAMIBIA  
AFRICA MINING INDABA  
2023

# STRATEGIC COOPERATION

## BGR-Geological Survey

- To support local mineral value addition and industrialisation – involves studying the suitability of minerals for commercial application.
- Results of these initiatives forms part of our mineral data infrastructure that is readily accessible to both upstream, downstream, and sidestream of the mineral value chain.



**BGR** Bundesanstalt für  
Geowissenschaften  
und Rohstoffe



**Lithium Potential in Namibia**  
– Evaluation of Economic Suitability

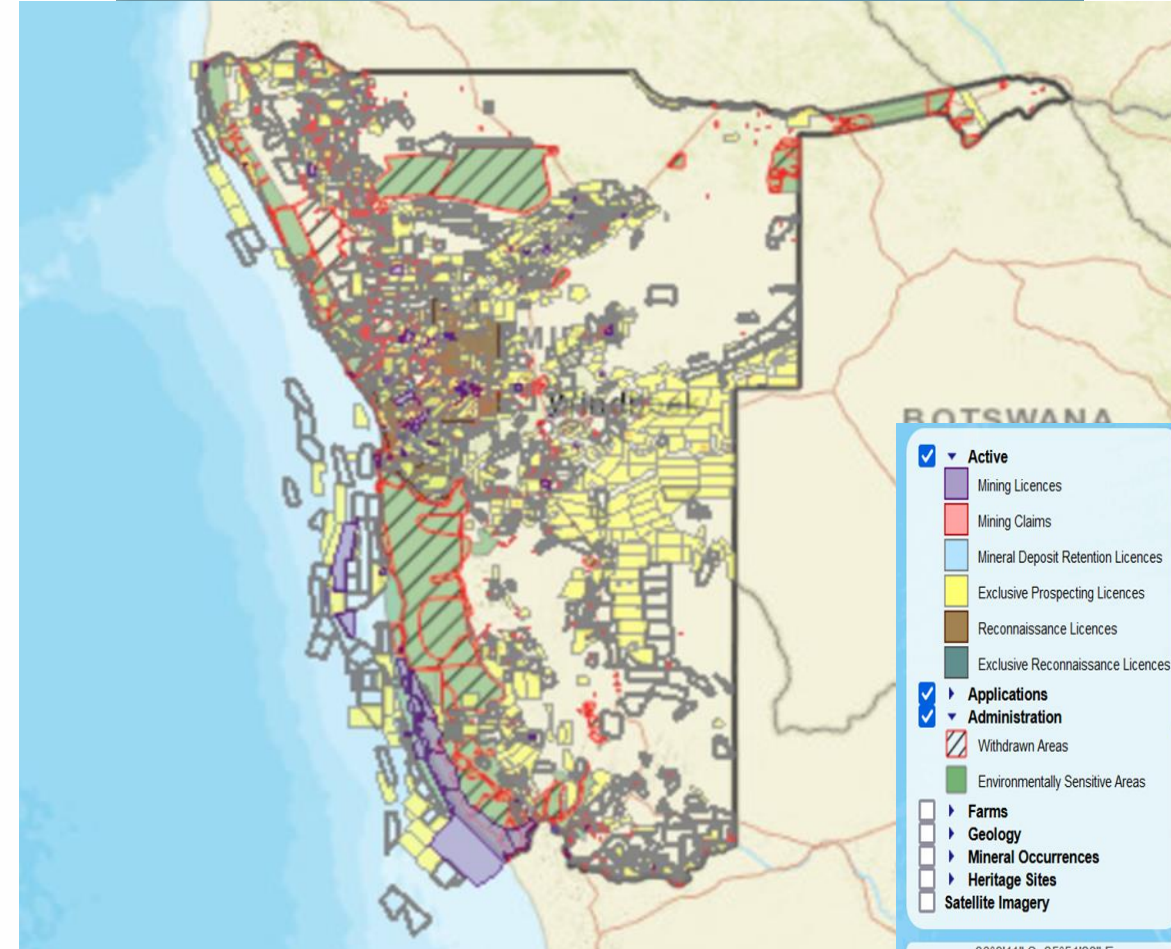


NAMIBIA  
AFRICA MINING INDABA  
2023

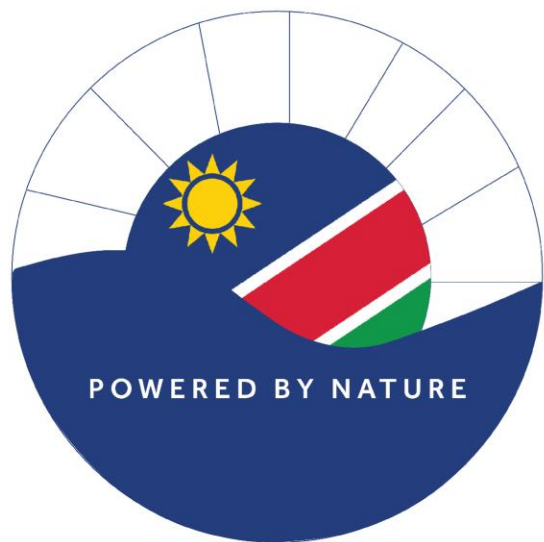
# MINERAL POTENTIAL, WHAT'S NEXT?

## Namibia Mining Cadastre Map Portal

- The economy relies heavily on the mining industry, it is therefore vital to identify new exploration frontiers and expand on existing resources to ensure sustainability of the mining sector and continued growth of the Namibian economy.
- Mining Legal Framework is conducive for the business
- Upcoming online application system, going live in August 2023
- Continuously improve the coverage and quality of baseline data and accessibility.







NAMIBIA

AFRICA MINING INDABA

2023

# THANK YOU

