



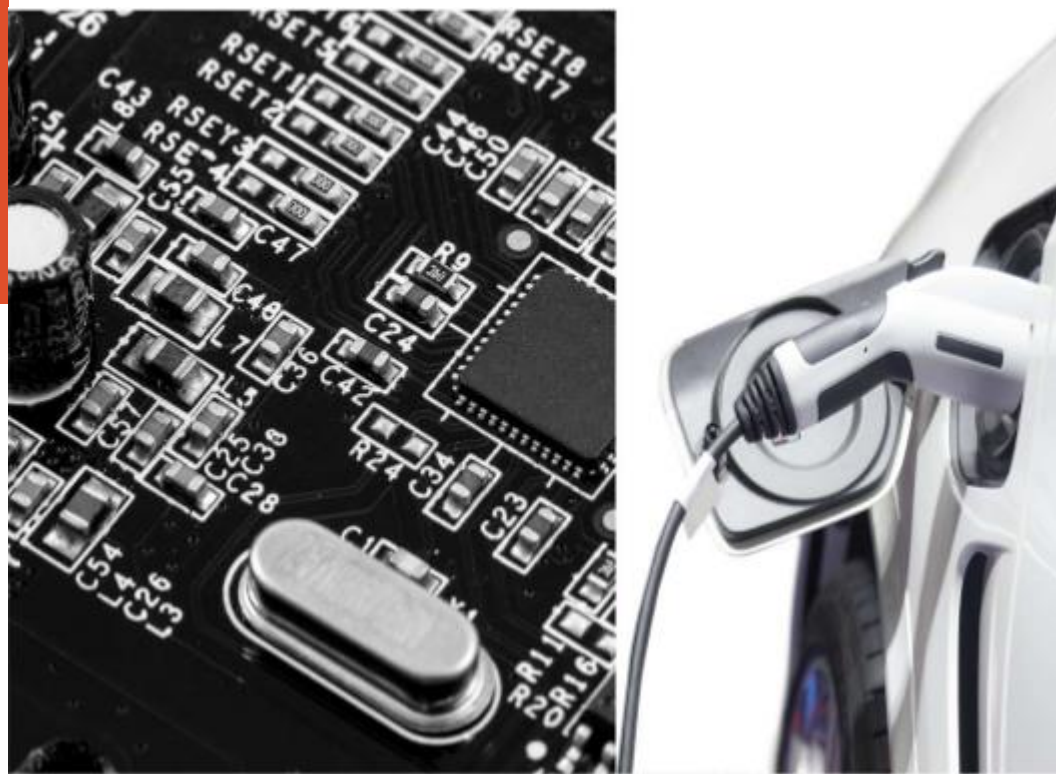
Ethically Sourced Critical Minerals

Lithium Tantalum-Niobium

Corporate Presentation

Q1 2023

A mining company dedicated to supplying non-conflict critical minerals and metals

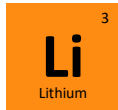


Near term production / early stage exploration focused on ethically- sourced strategic minerals

- Multi-project portfolio in Côte d'Ivoire, a mining friendly jurisdiction, focused on critical metals for fast growing sectors such as Electric Vehicles
 - Lithium (Atex Project): first drilling completed in late 2022 showed a potentially significant resource in proven jurisdiction
 - Tantalum and niobium (Atex Project): near term production from coltan
- Positive results from exploration work undertaken at Atex:
 - Completion of its Phase 1 diamond drill programme with pegmatite intersected in all 19 drill holes
 - Final Set of Assay Results reported in Q4 2022, included a significant intercept of 64m @ 1.24% Li₂O
 - Agreement entered into with Ricca Resources Limited ("Ricca") to fund the advancement of the Atex Project and adjacent Alliance licence in Côte d'Ivoire for up to US\$18.6m
 - The Phase II Programme is being undertaken in conjunction with Ricca Commenced its large-scale Phase II Soil Sampling Programme in Q1 2023, identifying so far two additional pegmatite zones
 - Fully funded second auger and RC drilling campaign to commence Q2 2023
- Objective to become a key supplier of critical minerals to fast growing end markets to generate significant returns and benefits for shareholders and local communities.



Strategic mineral focus: Lithium



Lithium is the lightest metal and used to make high energy density batteries. EV penetration is forecast to grow from 3% to ~30% by 2030*



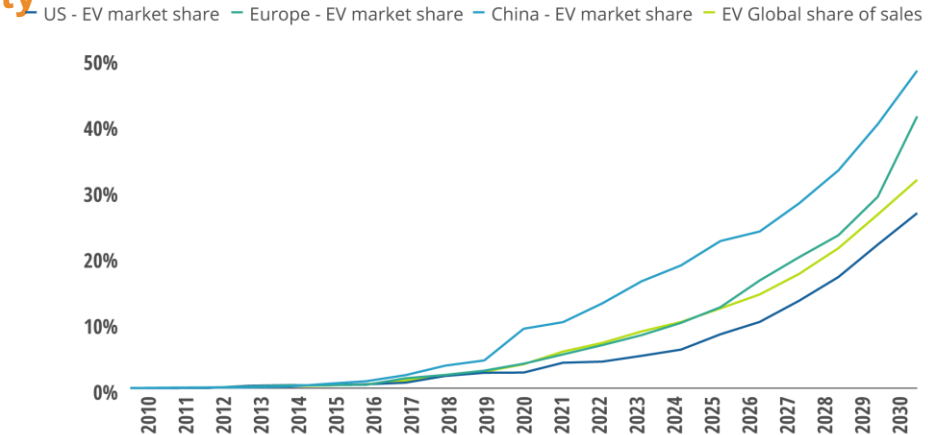
*Source: Deloitte Insights Electric Vehicles Setting for 2030

- Volkswagen describes lithium as 'irreplaceable element of the electric era'
- Supportive government policies driving global EV sales – key driver of demand
- **89% decrease in lithium-ion battery costs globally since 2010, according to Bloomberg, with a 13% annual cost reduction from 2019 to 2020 thanks to streamlining battery production costs**
- EV prices projected to decrease due to lower battery costs in the future
- Major vehicle manufacturers are set to introduce 400+ new EV models to market by 2025
- Lithium also found in mobile phones, laptops pacemakers, toys



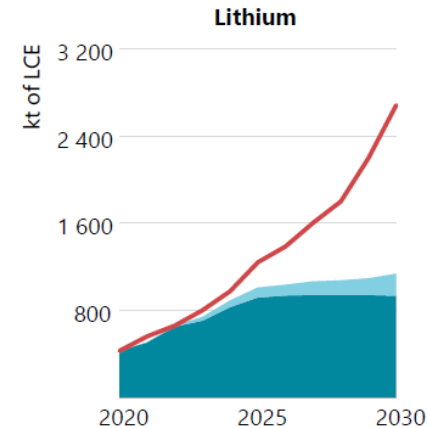
Sustainable and Ethically Sourced Natural Mineral Resources

Outlook for EV market share



Source: Deloitte analysis, IHS Markit, EV-Volumes.com¹⁷

Deloitte Insights | deloitte.com/insights



RISK THAT CURRENT LI PRODUCTION CANNOT SUPPORT PROJECTED DEMAND

Source: M Buxton, TU Delft, May 2021

Project Locations

- Initial focus is on the Atex licence in north-west Côte d'Ivoire.
- Atex licence includes both lithium and tantalum-niobium potential.
- Atex located within the Baoulé-Moss domain of the West African Craton:
 - Baoulé-Moss comprises several arcuate belts stretching hundreds of kms and are host to multiple gold, base metal and pegmatite-hosted columbo-tantalite and lithium deposits.
 - West African Craton comprises Archaean basement material and Proterozoic granite-greenstone terranes termed Birimian or Birimian Supergroup.
- Atex site accessible by air, high quality road and rail.
- Nickel and Manganese operators currently transport ore and concentrate for export through the ports of San Pedro and Abidjan.



Location of the Atex Project and the two AESI permits held by Bri Coltan. Note: location of the licences currently under application by FH Coltan (a wholly owned subsidiary of Firering) and the Alliance application are also shown.

Atex Lithium-Tantalum Project – Work to date



2021

- ✓ Appointment of diamond drilling contractor, FOREMI, to spearhead core drilling campaign.
- ✓ Commencement of Phase I DD campaign in July 2022.
- ✓ Detailed geological mapping, auger drilling and soil sampling provide evidence of a much larger pegmatite field than originally thought.
- ✓ Completion of the first phase auger drilling campaign and soil sampling at Atex, identifying areas of interest for Phase I diamond drilling ("DD") campaign.
- ✓ Acquisition of Toura Nickel-Cobalt Licence, Côte d'Ivoire, which is in line with the Company's strategy to focus on critical metals.
- ✓ Firering funded the drilling of an additional water borehole at Tounvré, a local village with limited access to clean water.
- ✓ Increased stake in the Atex Lithium - Tantalum Project from 51% to 77%, keeping in line with the Company's strategy to develop Atex to supply the increasing demand for ethically sourced critical minerals required for Net Zero transition.
- ✓ Completed 1st Phase of its DD programming comprising 19 holes and >3,000m of drilling. Pegmatite intersected in every hole with visual lithium mineralisation identified in 18 out of the 19 holes.
- ✓ Final set of assay results from our maiden scout diamond drill programme, including large intercepts of 64m @ 1.24% Li₂O and 25m @ 1.39% Li₂O.
- ✓ Phase II Exploration Programme is being undertaken in conjunction with Ricca. ~~Resources Limited.~~

2023

- ✓ Commenced Phase II with a large scale soil sampling programme in January 2023 with >3,000 soil samples taken and sent for pXRF and LIBS analyses. So far, two additional pegmatite zones were identified, one on each side of the main strike.
- ✓ Coremet test work for coltan is being carried out in Johannesburg, South Africa.



Dimond Drilling for Lithium and Sampling for Coltan



First diamond drill hole being drilled near Spodumene Hill.



Trench across Spodumene Hill identified a pegmatite with an apparent width of >100m. Another three trenches were dug across the hill.



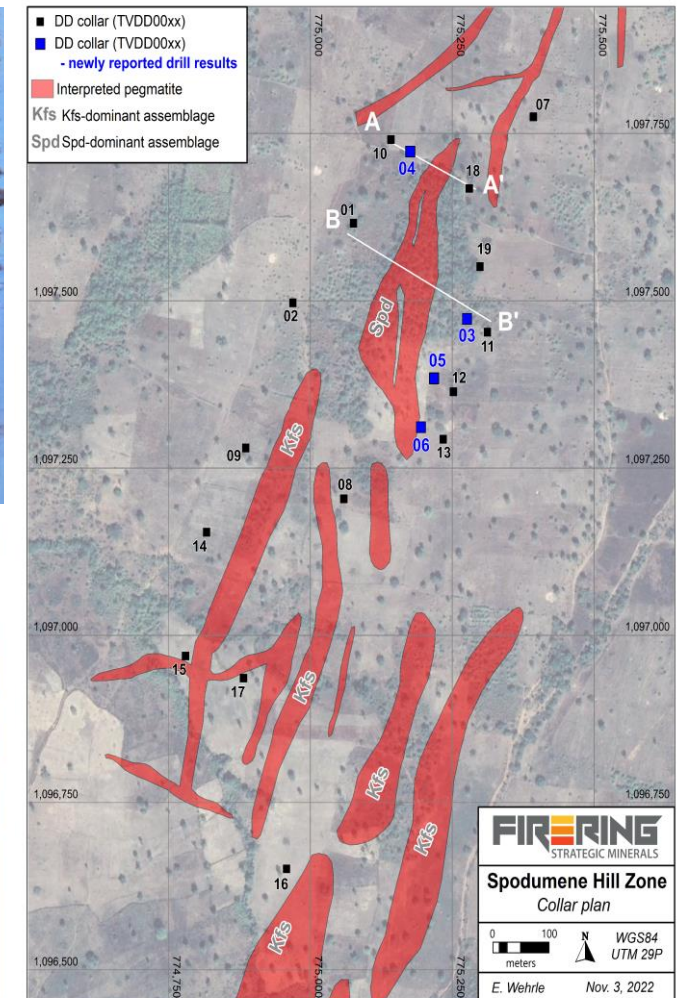
Plan view of interpreted pegmatites and drill hole collars.

- Tantalum Pit Sampling Programme commences on and around Spodumene Hill to define the design for the pilot 'Multi Gravity Separation' plant ("MGS")

- (<https://www.londonstockexchange.com/news-article/FRG/operational-update-and-directorate-change/15543780>)

Lithium – Scout Drilling Assays

- Positive results received from first assays from scout drilling including:
- 64m at 1.24% Li_2O from 76m in hole TVDD0004, including:
 - 27m at 2.13% Li_2O from 76m
 - 4.06% Li_2O , the highest individual sample assay grade.
- 15m at 0.59% Li_2O from 37m in hole TVDD0003, including:
 - 4m at 1.95% Li_2O from 45m.
- 25m at 1.39% Li_2O from 77m in hole TVDD0018, including:
 - 18m at 1.85% Li_2O from 80m.
- 7m at 1.33% Li_2O from 60m in hole TVDD001
- 21m at 0.73% Li_2O from 72m in hole TVDD0019, including:
 - 7m at 1.65% Li_2O from 73m.
- Confirms Atex's standing as the first potential significant lithium exploration project in Côte d'Ivoire.



Some photographs of recent core with visible spodumene (left) and spodumene and lepidolite (right).

Environmental and Social Governance

Strong Community and Government support in place

- More than 50 employees sourced from local community
- Constructed first water well for Tounvre village
- Supporting local community agriculture projects
- Adhering to stringent environmental standards and practices



Water well in Tounvre village



Supporting development of local food crops



Strategic Deal with Ricca Resources



Agreement entered into with Ricca Resources Limited, an Australian diversified minerals company, to fund the advancement of the Atex Project and adjacent Alliance licence (once granted) in Côte d'Ivoire for up to US\$18.6m

- Opportunity to fast-track:
 - the exploration of the Project and secure funding of its development pathway;
 - including its maiden Mineral Resource Estimate and feasibility studies.
- Combining **Firering and Ricca's exploration** and in-country expertise to accelerate ~~the~~ resource definition and onward development of the Project towards **production**.
- Côte d'Ivoire to benefit from the acceleration and development of its **first lithium project** within the prolific **West African lithium pegmatite** occurrences.
- The total amount of **US\$18.6m** paid by Ricca pursuant to the Agreement includes consideration paid to Firering, in particular:
 - US\$1m cash consideration;
 - US\$0.6m of Ricca shares which the Company plans to retain; and
 - Ricca to complete a four stage earn-in of up to 50% of the Project through the funding of up to US\$17m (current budget \$US14.7m), with the aim of achieving a Definitive Feasibility Studyto on the Project.
- Beyond the US\$17m expenditure to be spent to advance the Project, Ricca has agreed to fund a further US\$2m (to take total expenditure to US\$19 million) if the JORC inferred Mineral Resource Estimate surpasses 20Mt @ 1.0% Li₂O.

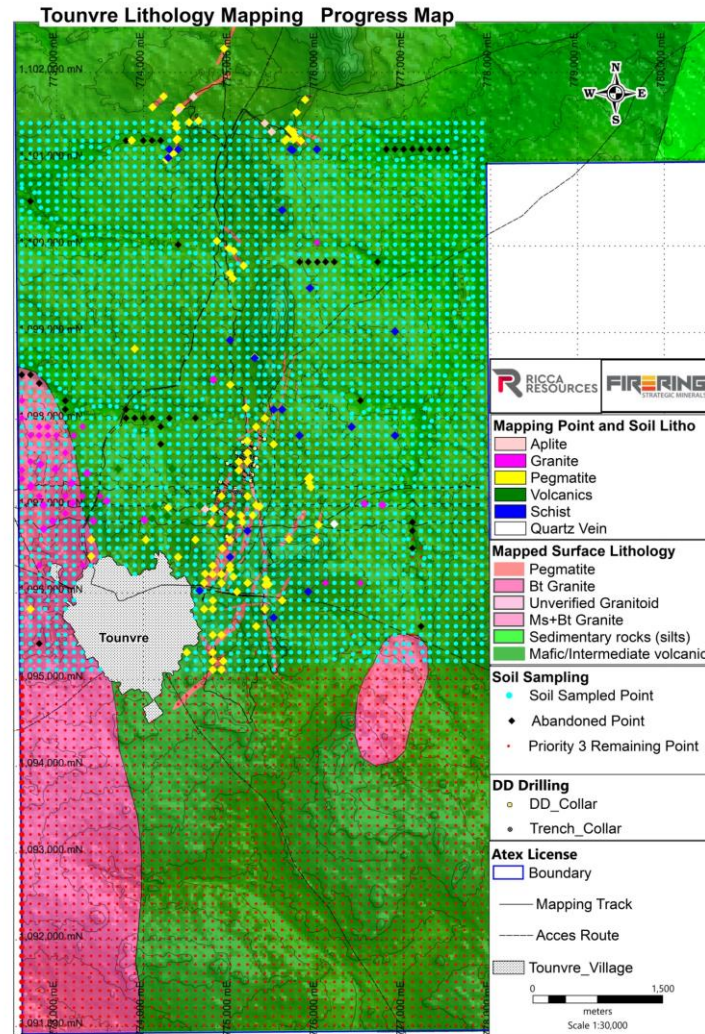


Next Steps – H1 2023

Second fully funded drilling programme being prepared for commencement in Q2 2023

- Next phase of exploration will continue with technical support from Ricca.
- Phase II of our planned soil sampling programme started on 9 January 2023.
- Further detailed mapping in the Atex licence area.
- Results from both campaigns will be used to design and commence fully funded Phase I of Reverse Circulation ("RC") drilling campaign and Phase II DD campaign.
- Results from the coltan test work supporting potential pilot production.

[Latest RNS](#)





38 Agias Fylaxeos
Nikolas Kort
Office 101, 3025 Limassol
PO Box 53277
Limasso
|
Cyprus



Sustainable and Ethically Sourced Natural Mineral Resources