



**MINING AND  
CIVIL SERVICES**

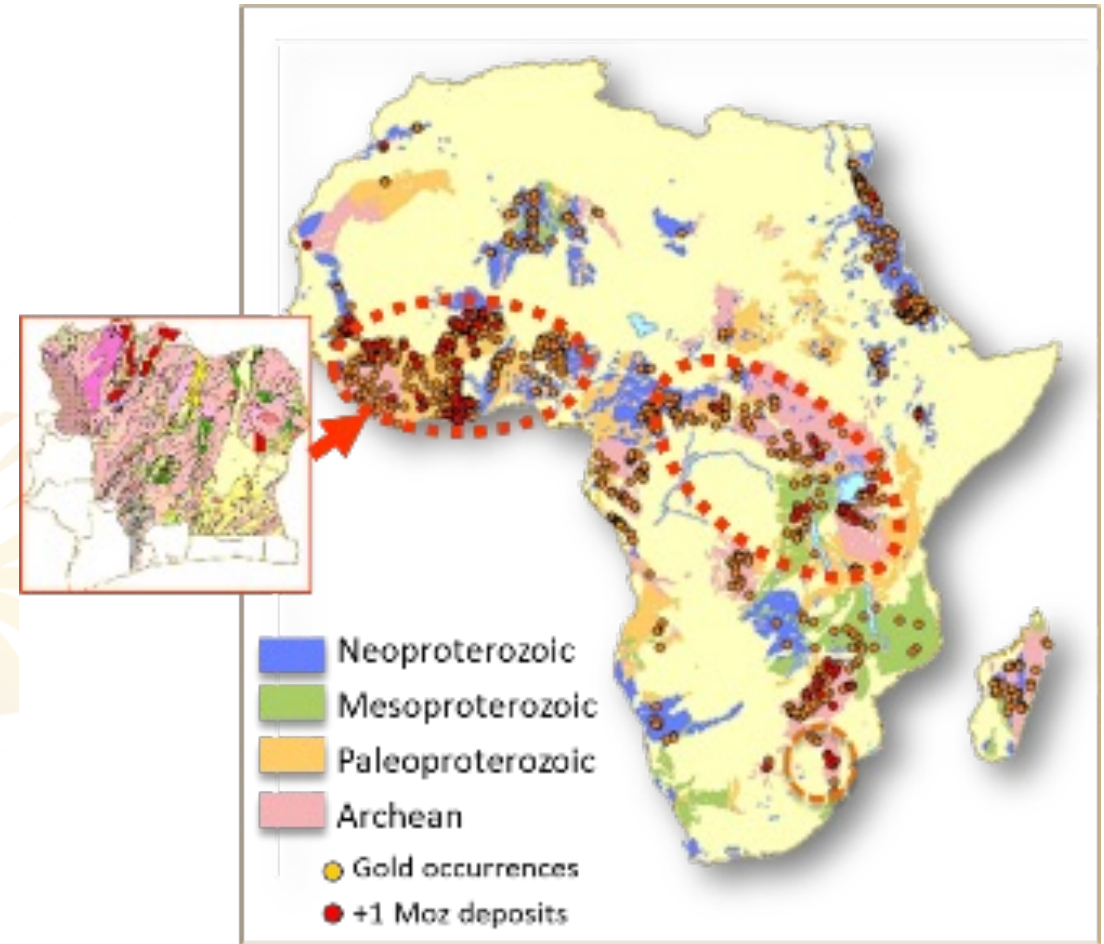
**"YOUR VALUE LEAVER  
IN THE AFRICAN  
MINING AND CIVIL  
INDUSTRIES"**

**MINING & CIVIL SERVICES  
COMPANY PROFILE**



# MACS...a valuable Local Partner to safely invest and operate in Côte d'Ivoire

- **COTE D'IVOIRE** is the right destination for mining investment within the geological context ....containing a 30% Birimian Rock coverage.
- **Quality manpower** and **competitive human capital** (School of Mines, expansion of the mining industries, best practices and international standards employed in mining operations)
- **Adequate infrastructures and facilities** ( 2 international Ports , Roads , Energy (Grid Connectivity), reliable ITC... )
- **Political** and **social** stability within the region
- **Emerging economy**, rapidly growing middle-class citizenry.



# .....MACS your Value Leaver...

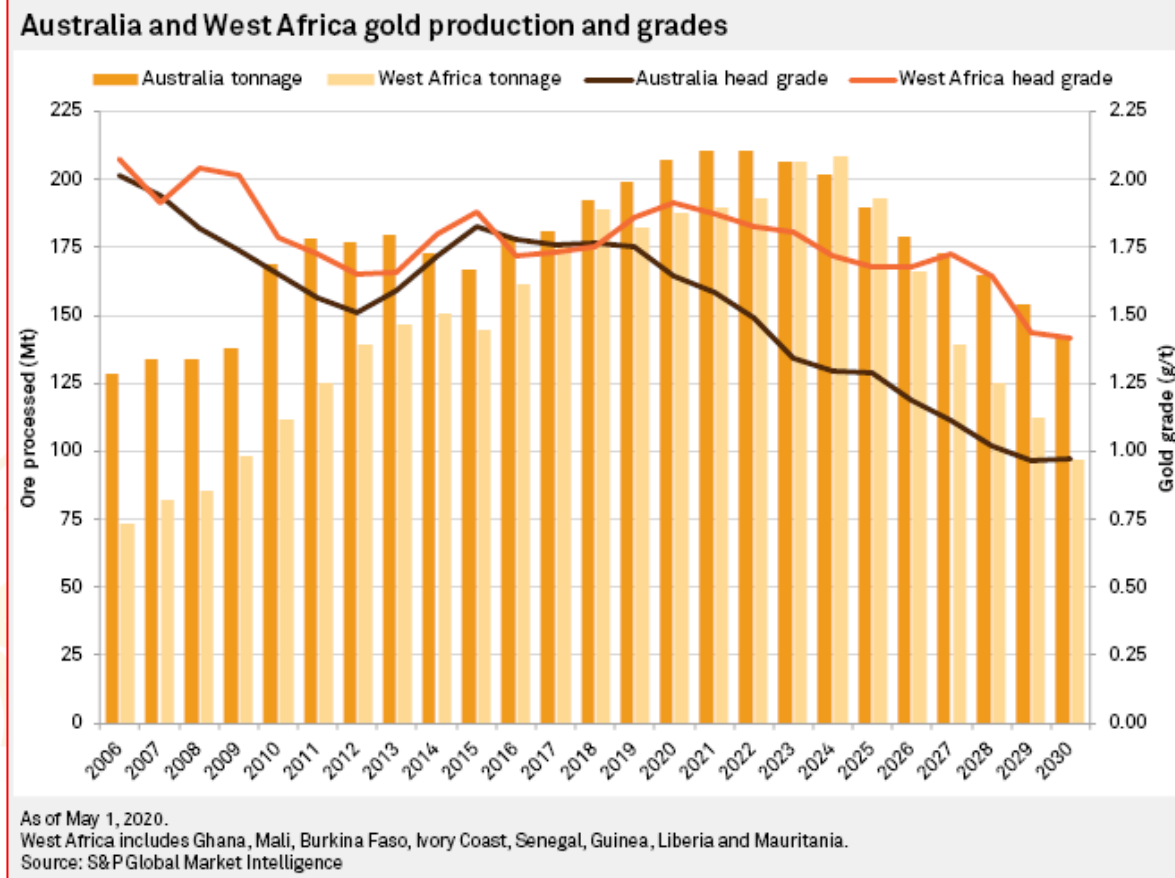
S&P projection of the **Gold reserves** by 2030 in WA is describing a considerable drop to 100Mt @ **1.38 g/t...**

To continue mining activities and, profitability, developing **Competent Local champion like Mining And Civil Services (MACS)** is required to **Unlock Mining industry positive impact on gross domestic product (GDP).**

Geological resources, commodities prices, operating Infrastructures are **parameters with less control.**

To overcome this challenge of profitability efficiency, operating with **Local expertise** provides an **optimum and competitive prices.**

Non **compressible costs**, could be optimize via **synergy** within the region and **technology transfer.**



# MACS...a reliable and sustainable partner to implement local content strategy

At **MACS** we believe **building a sustainable business** at a competitive cost is about investing in **Competent Local Partners** with the aim of **Returning Value to all Stakeholders**.

## .....Resources

Our professionalism, capitalized through 20 years of experiences in mining operations and management of the founders, guarantee stakeholders in the African mining industries an optimization of operational costs and efficiencies.

## .....Strategies

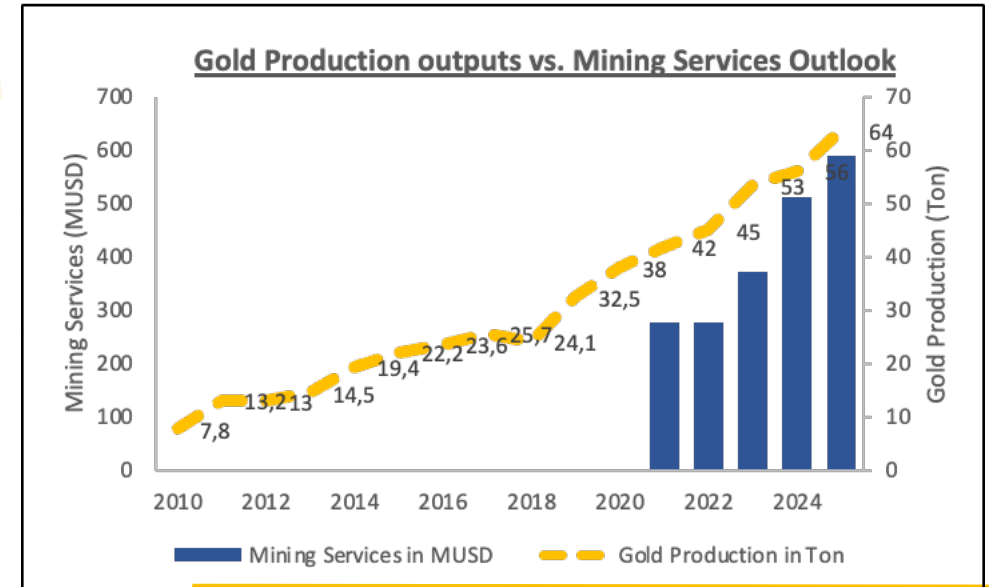
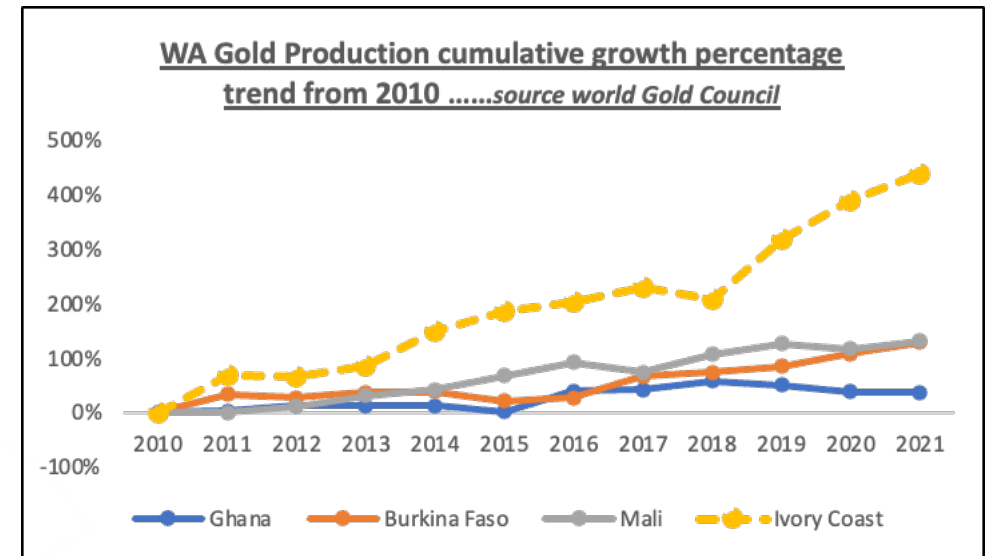
Our operating methods and project development strategies set path for business optimization at anytime of the process to provide quality services.

## .....Cost & Efficiencies

Our **knowledge and experience** in the mining industry aids in providing **competitive proposals** and to **proactively execute on mandates**, ensuring continuous improvement of our operational processes.

## .....Policies & Transparent Communications

We promote sustainable partnerships, comply with HSE standards while closely working with communities to safeguard your/our Social License.





## .....about MINING AND CIVIL SERVICES (MACS)....

### WHO WE ARE

Result driven business partner in mining and civil industry, we deliver technical, social and political economy progress, acting as **your value leaver in the African mining and civil industry.**

### OUR VISION

To be a **sustainable partner** in Mining & Civil Services.

### OUR MISSION

Becoming a **valued stakeholder** in the **African Mining & Civil Industry.** By unlocking value through employing the right resources, strategies, cost efficiencies and policies in a transparent communicative environment.



**"YOUR VALUE LEAVER  
IN THE AFRICAN  
MINING AND CIVIL  
INDUSTRIES"**

MINING & CIVIL SERVICES  
COMPANY PROFILE

**Mining And Civil Services (MACS)**

West Africa, Côte d'Ivoire Abidjan, Cocody deux plateaux 7ème tranche.



[www.macs-af.com](http://www.macs-af.com)



**Franck Sylvestre DIBI**

Managing Director - Founder

franckdibi@macs-af.com

+225 07 0742 6090